



FEATURED PRODUCTS

SECURITY / ACCESS / FIRE / SURVEILLANCE

**Extend Ethernet range 5x the distance
- without repeaters.**

Features:

- Deploy IP cameras/edge devices up to 500m over CAT5e/6.
- Passes PoE/PoE+ generated from midspan/endspan.
- Data rate 100Mbps full duplex.
- Supports PoE (802.3af) and PoE+ (802.3at) devices.
- Receivers available with 1, 4, 8 or 16 ports.
- UL Listed in the U.S. and Canada for Information Technology Equipment, CE Approved.

Long Range Ethernet Adapters



Pace1PRMT (kit)

- Single port adapter kit includes a Pace1PRM Receiver and a Pace1PTM Transceiver.

Receivers:

Pace1PRM

- Single port Receiver.

Pace4PRM

- Four (4) port Receiver.

Pace8PRM

- Eight (8) port Receiver.

Pace16PRM

- Sixteen (16) port Receiver.

Compatible Transceivers:

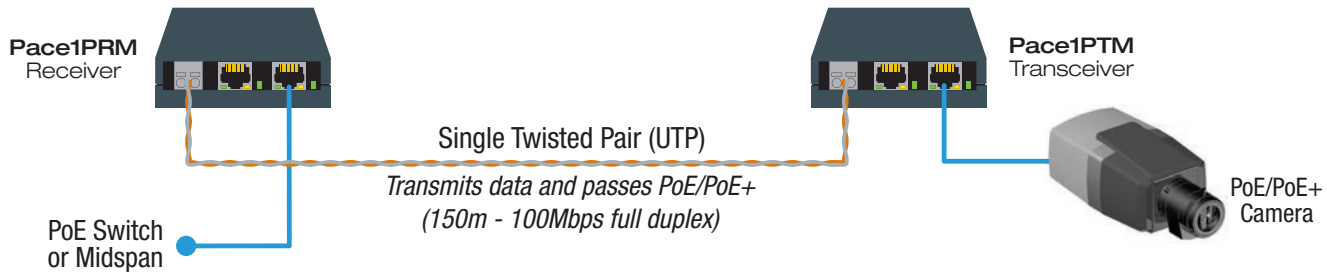
Pace1PTM

- Single port hardened Transceiver.
 - Also supports single UTP up to 150m.
- Dimensions: 3.5"W x 3.5"D x 1"H

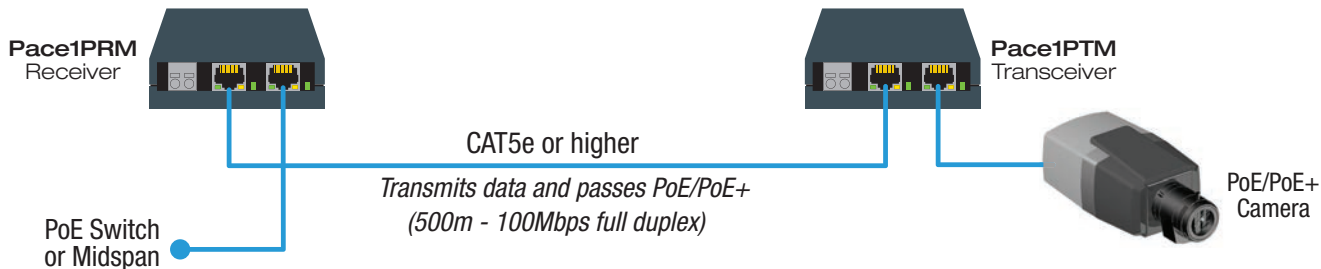
Pace1ST

- Single port hardened Transceiver.
 - More compact design for tighter spaces.
- Dimensions: 2.27"W x 2.645"D x 1.12"H

Pace1PRMT UTP Application:



Pace1PRMT CAT5e Application:



Managed Ethernet over Coax PoE+ Switch - up to 500m at 25Mbps.

Features:

- Deploy IP cameras/edge devices up to 500m over coax without repeaters.
- Generates PoE/PoE+ up the coax to an eBridge transceiver.
- Eliminates the costs and labor associated with installing new network cabling.
- Provides local and/or remote access to critical information via LAN/WAN.
- Email and SNMP trap message notifications report real-time power diagnostics.
- Event log tracks history.
- Built-in IP management allows for remote camera reset, monitoring.
- Built-in battery charging
(Optional rack mount battery enclosure available - model RE2)
- 115VAC/230VAC input.
- Compact 1U EIA 19" rack mount chassis.



8 Port EoC Receiver with Integral PoE+ Switch

eBridge8E

- Eight (8) 25Mbps coax ports
- One (1) Gigabit Uplink
- 30W full power per port (240W of total power)

Compatible Transceivers:

eBridge1PCTX

- Single port hardened Transceiver.
Dimensions: 2.5"W x 3.8"D x 1"H



eBridge1ST

- Single port hardened mini-Transceiver.
Dimensions: 2.27"W x 2.645"D x 1.12"H



Ethernet over Coax up to 500m at 25Mbps.

Features:

- Deploy IP cameras/edge devices up to 500m over coax without repeaters.
- Cost-effective solution to upgrade and expand security and surveillance utilizing coax.
- Data rate 25Mbps.
- Passes PoE/PoE+ generated from midspan/endspan.
- Supports PoE (802.3af) and PoE+ (802.3at) devices.
- Receivers available with 1, 4, 8 or 16 ports.
- UL Listed in the U.S. and Canada for Information Technology Equipment, CE Approved.

EoC Adapters



eBridge1PCRMT (kit)

- Single port adapter kit includes an eBridge1PCRMT Receiver and an eBridge1PCTX Transceiver.

Receivers:

eBridge1PCRMT

- Single port Receiver.

eBridge4PCRMT

- Four (4) port Receiver.

eBridge8PCRMT

- Eight (8) port Receiver.

eBridge16PCRMT

- Sixteen (16) port Receiver.

Compatible Transceivers:

eBridge1PCTX

- Single port hardened Transceiver.
Dimensions: 2.5"W x 3.8"D x 1"H

eBridge1ST

- Single port hardened mini-Transceiver.
- More compact design for tighter spaces.
Dimensions: 2.27"W x 2.645"D x 1.12"H



Ethernet over Coax up to 300m at 100Mbps.

Features:

- Deploy IP cameras/edge devices up to 300m over coax without repeaters.
- Cost-effective solution to upgrade and expand security and surveillance utilizing coax.
- Data rate 100Mbps full duplex.
- Passes PoE/PoE+ generated from midspan/endspan.
- Supports PoE (802.3af) and PoE+ (802.3at) devices.
- Receivers available with 1, 4, 8 or 16 ports.
- UL Listed in the U.S. and Canada for Information Technology Equipment, CE Approved.

EoC Adapters



eBridge100STR (kit)

- Single port adapter kit includes an eBridge100RM Receiver and an eBridge100ST compact Transceiver.

Receivers:

eBridge100RM

- Single port Receiver.

eBridge400PCRM

- Four (4) port Receiver.

eBridge800PCRM

- Eight (8) port Receiver.

eBridge1600PCRM

- Sixteen (16) port Receiver.

Compatible Transceivers:

eBridge100TM

- Single port hardened Transceiver.
- Also supports CAT5e up to 500m.
- Dimensions: 2.5"W x 3.8"D x 1"H

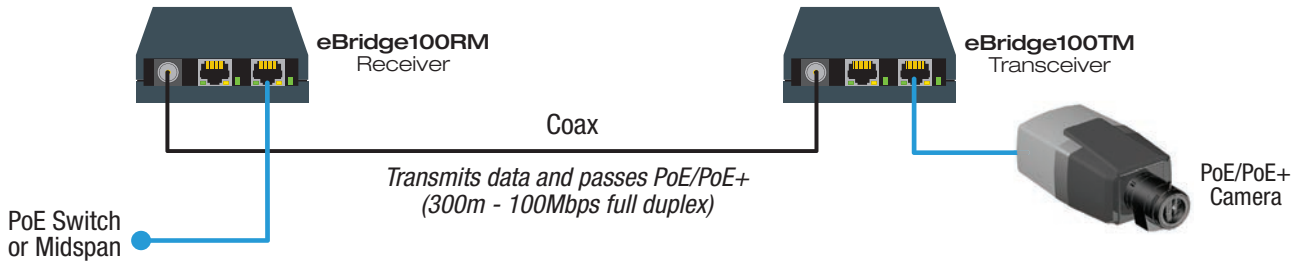


eBridge100ST

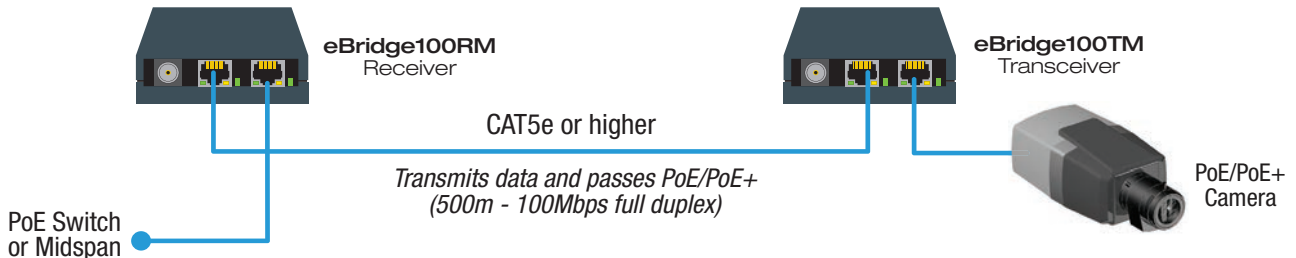
- Single port hardened mini-Transceiver.
- More compact design for tighter spaces.
- Dimensions: 2.27"W x 2.645"D x 1.12"H



eBridge100RMT Coax Application:



eBridge100RMT CAT5e Application:



Outdoor Hi-PoE over Coax/CAT5e - at Longer Distances.

Features:

- Deploy IP cameras/edge devices up to 300m over Coax or 500m over CAT5e/6 without repeaters.
- Data 100Mbps full duplex.
- Supports PoE (802.3af), PoE+ (802.3at) and Hi-PoE (60W) devices.
- Eliminates labor and costs of deploying new cable utilizing existing infrastructure.
- Provides local and/or remote access to critical information via LAN/WAN.
- Email and SNMP trap message notifications report real-time power diagnostics.
- Event log tracks history.
- Built-in IP management allows for remote camera reset, monitoring.
- UL Listed in the U.S. and Canada for Information Technology Equipment and Equipment Installed Outdoors, CE Approved.



Outdoor pole mount kits available - PMK1 (pg. 14)

Outdoor 2-Port EoC/CAT5e Transceiver

eBridge200WPM

- Passes PoE/PoE+ or Hi-PoE (60W).
- IP66, NEMA4/4X Rated Enclosure with stainless steel lockable latch.
- Integral flanges and lightweight design simplify mounting.

Compatible Receivers:

eBridge100RM

- Single port Receiver required for PoE/PoE+ Coax applications.

eBridge100SPR

- Single port Receiver required for Hi-PoE (60W) Coax applications.

Pace1PRM

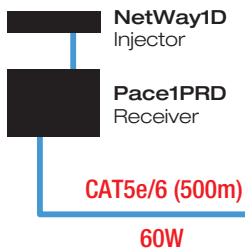
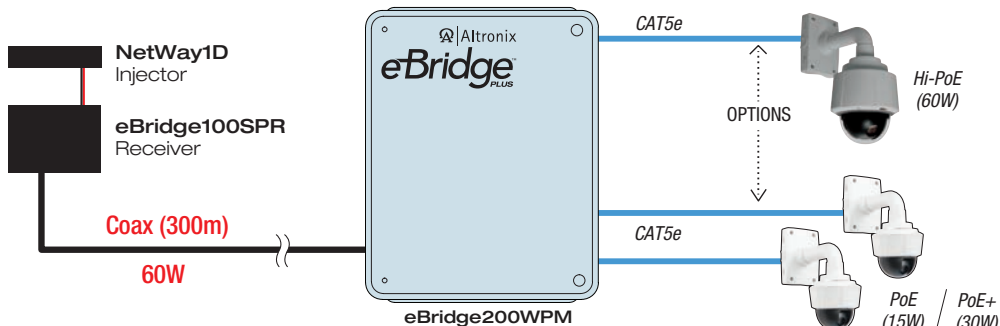
- Single port Receiver required for PoE/PoE+ CAT5e/6 applications.

Pace1PRD

- Single port Receiver required for Hi-PoE (60W) CAT5e/6 applications.



eBridge200WPM Outdoor Transceiver Switch Coax Application



eBridge200WPM Outdoor Transceiver Switch CAT5e/6 Application

Managed Midspans with more bandwidth & more power.

Features:

- Supports PoE (802.3af) and PoE+ (802.3at) devices up to 100m over CAT5e/6
- Provides local and/or remote access to critical information via LAN/WAN.
- Email and SNMP trap message notifications report real-time power diagnostics.
- Event log tracks history.
- Built-in IP management allows for remote camera reset, monitoring.
- Programmable port priority.
- Auto detection and protection of legacy non-PoE cameras/devices.
- PoE shutdown feature is selectable by port - allows for cameras and/or devices to be reset.
- Built-in battery charging
(Optional rack mount battery enclosure available - model RE2)
- 115VAC/230VAC input.
- Compact 1U EIA 19" rack mount chassis



Managed Midspans

NetWay8G

- Supports up to eight (8) PoE/PoE+ cameras/devices.
- 10/100/1000 Ethernet ports
- 30W full power per port (240W of total power)

NetWay16G

- Supports up to sixteen (16) PoE/PoE+ cameras/devices.
- 10/100/1000 Ethernet ports
- 30W full power per port (480W of total power)

Managed PoE+ / SFP Hardened Switches

Features:

- Supports PoE (802.3af, PoE+ (802.3at) and Hi-PoE devices.
- Email and SNMP trap message notifications report real-time power diagnostics.
- Event log tracks history.
- Built-in IP management allows for remote camera reset, monitoring and reporting.
- Integral surge protection.
- Built-in battery charging
- Auto detection and protection of legacy non-PoE cameras/devices.
- 115VAC/230VAC input.



Outdoor pole mount kits available - PMK1 (pg. 14)

PoE+ Switches with Fiber Port

NetWay4EWP (Outdoor version)

- One (1) Gigabit SFP port (uplink)
 - Four (4) 10/100 PoE+ Ethernet ports at 30W per port (120W of total power) or two (2) ports are configurable for 60W (Hi-PoE) each.
 - IP66, NEMA4/4X Rated Enclosure with stainless steel lockable latches.
 - Integral flanges and lightweight design simplify mounting.
- Dimensions: 13.31"H x 11.31"W x 5.59"D

NetWay4EWPX (Outdoor version)

- Same as NetWay4EWP in larger NEMA4/4X Rated Enclosure.
 - Accommodates four (4) 12VDC/7AH batteries (48V of backup).
- Dimensions: 17.375"H x 12"W x 6.5"D

NetWay4EX (Indoor version)

- Same as NetWay4EWP with NEMA1 Rated Enclosure.
- Dimensions: 13"H x 13.5"W x 3.25"D



NetWay4EWP

Features:

- Single port provides power and passes data over CAT5e/6 cable up to 100m.
- Capable of sourcing up to 60W max. via dual IEEE 802.3af outputs over (4) pairs.
- Email and SNMP trap message notifications report real-time power diagnostics.
- Event log tracks history.
- Built-in IP management allows for remote camera reset, monitoring and reporting.
- Integral surge protection.
- Auto detection and protection of legacy non-PoE cameras/devices.
- 115VAC/230VAC input.
- UL Listed in the U.S. and Canada for Information Technology Equipment and Equipment Installed Outdoors, CE Approved.



Repeater Module

NetWayXTX

- Extends data (video) an additional 100m each
- Supports PoE (802.3af) and PoE+ (802.3at) devices.
- Multiple units may be used to extend range.
- Plug-and-play installation, no external power required.

Outdoor Hi-PoE Injector

NetWay1DWPM

- Provides PoE/PoE+ and Hi-PoE power for outdoor cameras/devices.
- IP66, NEMA4/4X Rated Enclosure with stainless steel lockable latch.
- Integral flanges and lightweight design simplify mounting.



Outdoor pole mount kits available - PMK1 (pg. 14)

Single Port Injector

NetWay1X

- Supports PoE (802.3af) and PoE+ (802.3at) devices up to 100m.
- 24VAC/VDC input.
- UL Listed in the U.S. and Canada for Information Technology Equipment, CE Approved.



UL Listed Multi-Output Power for all outdoor applications.

Features:

- Provides outdoor power for surveillance and security devices.
- Individual power LED indicators.
- 115/230VAC input.
- IP66, NEMA4/4X Rated outdoor enclosure with stainless steel lockable latches.
- Integral flanges and lightweight design simplify mounting.
- UL Listed in the U.S. and Canada for Information Technology Equipment and Equipment Installed Outdoors. CE Approved.



Two (2) Output Models

Altronix Model	Outputs/Voltage	Output Power	Output Protection
WayPoint10AU	2 @ 24VAC	4 amp	Fused
	2 @ 28VAC	3.5 amp	
	1 @ 24VAC and 1 @ 28VAC	3.5 amp	
WayPoint10ADU	2 @ 24VAC	4 amp	PTC
	2 @ 28VAC	3.5 amp	
	1 @ 24VAC and 1 @ 28VAC	3.5 amp	
WayPoint17AU	2 @ 24VAC	7.25 amp	Fused
	2 @ 28VAC	6.25 amp	
	1 @ 24VAC and 1 @ 28VAC	6.25 amp	
WayPoint30AU	2 @ 24VAC	12.5 amp	Fused
	2 @ 28VAC	10 amp	
	1 @ 24VAC and 1 @ 28VAC	10 amp	

Outdoor pole mount kits available - PMK1 (pg. 14)

UL Listed Multi-Output Power for all outdoor applications.

Four (4) Output Models

Altronix Model	Outputs/Voltage	Output Power	Output Protection
WayPoint17A4U	4 @ 24VAC	7.25 amp	Fused
	4 @ 28VAC	6.25 amp	
WayPoint30A4U	4 @ 24VAC	12.5 amp	Fused
	4 @ 28VAC	10 amp	
WayPoint30A4DU	4 @ 24VAC	12.5 amp	PTC
	4 @ 28VAC	10 amp	

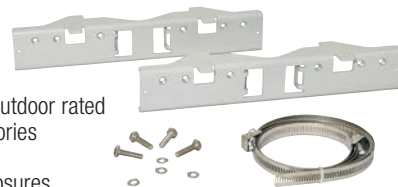
Eight (8) Output Models

Altronix Model	Outputs/Voltage	Output Power	Output Protection
WayPoint30A8U	8 @ 24VAC	12.5 amp	Fused
	8 @ 28VAC	10 amp	
WayPoint30A8DU	8 @ 24VAC	12.5 amp	PTC
	8 @ 28VAC	10 amp	

Pole Mount Kit

PMK1

- Outdoor pole mount kit.
- Designed to simplify installation of any Altronix outdoor rated power supplies and accessories housed in WP1, WP2, WP3 and WP4 NEMA rated enclosures.



Features:

- Simplifies mounting and overall installation.
- Accommodates 2"- 8" (diameter) pole or up to 5" square pole.
- Kit includes: two (2) powder coated steel mounting brackets, two (2) wormgear quick release straps, four (4) stainless steel bolts and lock washers.

Facilitates FACP Interface / Emergency Egress over the same cable.

Features:

- Supervised (N.O. or N.C.) fire alarm disconnect releases locking devices while maintaining PoE to the network door controller(s).
- A single FACP connection links multiple units
- Fire Alarm Disconnect is selectable by output.
- Power outputs are selectable for 12VDC or 24VDC mag locks or strikes
- Total current available: 1250mA @ 12VDC or 625mA @ 24VDC
- Two (2) independent 12VDC-24VDC access control trigger inputs
- PoE+ (802.3at) compliant
- Built-in overload protection
- Electronically filtered and regulated outputs
- UL Listed in the U.S. and Canada for Access and Information Technology Equipment, CSFM and CE Approved.

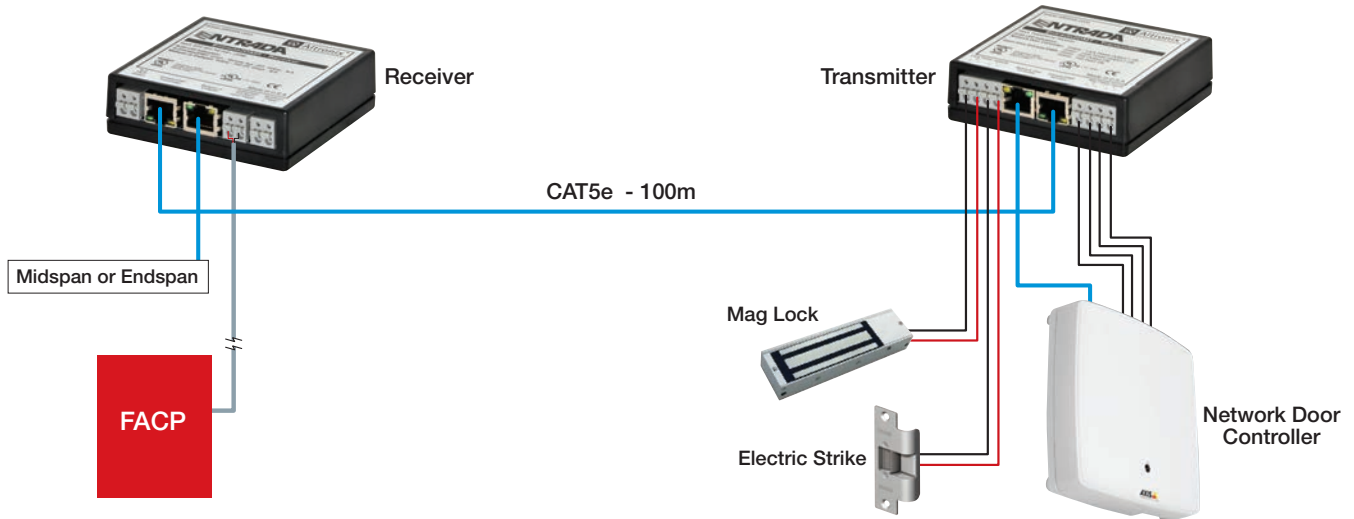


Network Access FACP Adapter Kit

Entrada2DMK

- Facilitates the release of locking devices in the event of a fire alarm condition without the added costs of running additional cables and having to deploy more power supplies and fire relays.
- Includes a Entrada2DMR Receiver and a Entrada2DMT Transmitter.

Entrada2DMK Typical Application:





next generation power supply/chargers

Communicate with your Security, Access and Fire power.

Features:

Coupled with our LINQ2 Network Communication Module you can monitor, control and report power from anywhere...

- Wide range of power configurations with single or multiple outputs.
- Built-in fire alarm disconnect.
- Over voltage protection - guards against equipment damage.
- 30-50% faster battery charging.
- Low power cutoff - protects stand-by batteries from deep discharge.
- All models include additional aux. Class 2 Rated power-limited output rated @ 1 amp.
- AC fail, low battery and battery presence supervision.
- Power LED visible on the enclosure door.
- Enclosure accommodates up to two (2) 12VDC/7AH batteries.
- Includes cam lock and battery leads.
- UL Listed in the U.S. for Access, Burg. and Fire.
UL Listed in Canada for Access and Burg., CE Approved.



Altronix Model	Fuse Protected Outputs*	Output Voltage	Output Current (max)
eFlow3N	1	12VDC or 24VDC	2A
eFlow3N4	4		
eFlow4N	1	12VDC or 24VDC	4A
eFlow4N8	8		
eFlow6N	1	12VDC or 24VDC	6A
eFlow6N8	8		
eFlow6N16	16		
eFlow102N	1	12VDC	10A
eFlow102N8	8		
eFlow102N16	16		
eFlow104N	1	24VDC	10A
eFlow104N8	8		
eFlow104N16	16		

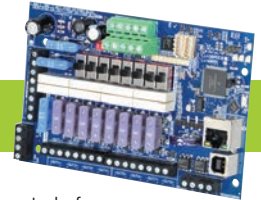
*PTC Protected power-limited output models are available.

Upgrade, control and communicate with virtually any low voltage AC or DC power supply over the network.

Features:

- Provides local and/or remote access to critical information via LAN/WAN.
- Input and output voltage and current monitoring
- Real time battery health monitoring
- High temperature monitoring
- ...and more!
- Email and SNMP trap message notifications report real-time power diagnostics.
- Control power output(s) locally or remotely.
- Event log tracks history.
- Secure Socket Layer (SSL).
- Programmable via USB or web browser.
- Reduces system downtime, eliminates service calls and creates RMR opportunities.
- Includes operating software and 6ft. USB cable.

Network Power Distribution Module



LINQ8PD

- Facilitates monitoring, reporting and control of one (1) or two (2) AC or supervised DC power supply/chargers.
- Retrofits with most currently installed multi-output power supply/chargers.
- Output voltage is individually selectable for each of the eight (8) outputs when utilizing two (2) power supplies.
- Battery backup is selectable by output.

Monitor, Control and Report Power - from Anywhere.

Features:

- Provides local and/or remote control and critical information via LAN/WAN for all eFlow power supply/chargers (*eFlow and Maximal-F series*).
- DC output voltage and current monitoring
- Real time AC and battery status
- Unit temperature monitoring
- Email and SNMP trap message notifications report real-time power diagnostics.
- Two (2) integral network controlled Form "C" relays may be used for myriad applications.
- Event log tracks history.
- Secure Socket Layer (SSL).
- Programmable via USB or web browser.
- Reduces system downtime, eliminates service calls and creates RMR opportunities.
- Includes operating software and 6ft. USB cable.

Network Communication Module



LINQ2

- Monitor and control power while reporting system diagnostics via Email/SNMP notifications for two (2) Altronix eFlow power supply/chargers (*eFlow and Maximal-F Series*).

Network Integration Dashboard

eFlow status view:

Power Supply 1 ID (eFlowNB)	
Voltage	Current
14.2 VDC	0.1 amp

Power Supply 2 ID (eFlowNB)	
Voltage	Current
14.2 VDC	0.1 amp

Unit Temperature: 20.9° C

The screenshot shows the 'eFlow Management Interface' with a central table listing power supply units. A callout box highlights the 'eFlow status view' for two units, showing voltage and current readings. The main interface includes a navigation menu on the left, a central status table, and a right-hand pane with additional system information.

IP Camera view:

The screenshot displays the 'IP Camera view' within the LINQ DASH BOARD interface. It features a large central video window showing a live feed from an 'Arecont Vision' camera. The interface includes a navigation menu on the left, a top header with the LINQ DASH BOARD logo, and a right-hand pane with camera settings and status information.

Features:

- Provides a single software platform for monitoring power supply status, receiving SNMP trap messages and managing settings.
- Intuitive interface allows the user to manage multiple sites with ease regardless of the number of monitored devices.
- This easy to use application is designed to work with current Altronix products that provide web based management and will also allow access to third party web based solutions such as IP cameras.
- Compatible Altronix products:
 - LINQ2, LINQ8PD
 - eBridge4SK, eBridge4PCR, eBridge8E, eBridge8PCR, eBridge16PCR and eBridge200WPM
 - NetWay4EX, NetWay4EWP, NetWay4ESK, NetWay8G, NetWay8M, NetWay16G, NetWay16M and NetWay1DWPM
 - FireSwitch108

Customized NAC power and notification

Features:

- Power outputs are programmable as:
 - 8 Class B NAC outputs
 - 4 Class A NAC outputs
 - Aux. power outputs (with or without battery backup)
 - Any combination of the above
- EOL resistor values are programmable by output.
- LCD display provides status monitoring.
- Ethernet port facilitates local programming and remote status monitoring.
- Temporal Code 3, Steady Mode, Input to Output Follower Mode.
- Temporal Code 4 for system CO alarms.
- Signal circuit trouble memory - quickly locates intermittent system trouble and eliminates costly and unnecessary service calls.
- Synchronize up to twelve (12) FireSwitch108 units.
- Compatible with 12VDC or 24VDC fire panels.
- Built-in Cooper®, Gentex®, Potter® and System Sensor® sync protocols.
- Input to output follower mode.
- Enclosure accommodates up to (2) 12VDC/12AH batteries.
- Includes cam lock and battery leads.
- UL Listed in the U.S. and Canada for Fire.

NAC Power Extender

FireSwitch108

- 24VDC regulated power-limited NAC outputs.
- 10 amp max.
- 2.5 amp max. current per output.
- One (1) dedicated aux. output with battery backup rated at 1 amp.
- Two (2) configurable inputs trigger via Class A or Class B signal circuits (polarity reversal) or dry contacts.



Customize your access control with the industry's leading manufacturers.

Features:

- Trove™ enclosures let you easily integrate Altronix power with access controllers and accessories from the industry's leading manufacturers.
- Removable backplanes allow you to configure and pretest prior to on-site installation.
- Simplifies board layout and wire management.
- Reduces installation time and labor costs.
- Convenient knockout configuration.
- Accommodates up to four (4) 12VDC/12AH batteries.
- Includes cam lock, tamper switch and mounting hardware.

Enclosure Dimensions:

27.25"H x 21.75"W x 6.375"D

Backplane Dimensions:

25.375"H x 19.375"W x 0.5"D



** Boards not included*

For up to 12 door Access systems

Altronix®

Trove2M2 Enclosure + Backplane

- Accommodates the following Mercury boards with or without Altronix power/accessories:
 - EP1502, MR52, MR16IN, MR16OUT
 - EP2500 or MUX8
 - MR51e
 - MR50
 - Altronix Power Supplies
 - Altronix Sub-Assemblies
- Includes Altronix Trove2 Enclosure and one (1) removable TM2 backplane.

TM2 Backplane only

- Accommodates Mercury boards with or without Altronix power/accessories
- Fits Altronix Trove2 enclosure.



For up to 12 door Access systems

Altronix®

Trove2V2 Enclosure + Backplane

- Accommodates the following Verx boards with or without Altronix power/accessories:
 - V100, V200, V300, V1000 or V2000
 - Altronix Power Supplies
 - Altronix Sub-Assemblies
- Fits Altronix Trove2 enclosure.
- Includes Altronix Trove2 Enclosure and one (1) removable TV2 backplane.



TV2 Backplane only

- Accommodates Verx boards with or without Altronix power/accessories.
- Fits Altronix Trove2 enclosure.



* Boards not included

Optional TMV2 door backplane available for up to 24 Door Access Systems

For up to 10 door Access systems

Altronix®

Trove2CV2 Enclosure + Backplane

- Accommodates the following CDVI boards with or without Altronix power/accessories:
 - A22
 - Altronix Power Supplies
 - Altronix Sub-Assemblies
- Includes Altronix Trove2 Enclosure and one (1) removable TCV2 backplane



TCV2 Backplane only

- Accommodates CDVI boards with or without Altronix power/accessories
- Fits Altronix Trove2 enclosure.

* Boards not included

For up to 12 door Access systems

Altronix®

Trove2AM2 Enclosure + Backplane

- Accommodates the following AMAG boards with or without Altronix power/accessories
 - M2150-2DC
 - M2150-4DC, M2150-AC24/4
 - M2150-2DBC
 - M2150-4DBC
 - M2150-8DBC
 - Altronix Power Supplies
 - Altronix Sub-Assemblies
- Includes Altronix Trove2 Enclosure and one (1) removable TAM2 backplane



TAM2 Backplane only

- Accommodates AMAG boards with or without Altronix power/accessories.
- Fits Altronix Trove2 enclosure.

For up to 8 door Access systems

Altronix®

Trove2KA2 Enclosure + Backplane

- Accommodates the following Kaba Ilco boards with or without Altronix power/accessories:
 - OCB8
 - 8500
 - CIM
 - DPS15
 - Altronix Power Supplies
 - Altronix Sub-Assemblies
 - Altronix T16100
- Includes Altronix Trove2 Enclosure and one (1) removable TKA2 backplane.



TKA2 Backplane only

- Accommodates Kaba Ilco boards with or without Altronix power/accessories
- Fits Altronix Trove2 enclosure.

For up to 16 door Access systems

Altronix®

Trove2SH2 Enclosure + Backplane

- Accommodates the following Software House boards with or without Altronix power/accessories:
 - iStar Ultra GCM
 - iStar Ultra ACM
 - Altronix Power Supplies
 - Altronix Sub-Assemblies
- Includes Altronix Trove2 Enclosure and one (1) removable TSH2 backplane.

SOFTWARE HOUSE



TSH2 Backplane only

- Accommodates Software House boards with or without Altronix power/accessories
- Fits Altronix Trove2 enclosure.

* Boards not included

Our space-saving version of Trove...for up to 8 door access systems.

Features:

- Trove™ enclosures let you easily integrate Altronix power with access controllers and accessories from the industry's leading manufacturers.
- Removable backplanes allow you to configure and pretest prior to on-site installation.
- Simplifies board layout and wire management.
- Reduces installation time and labor costs.
- Convenient knockout configuration.

- Accommodates up to two (2) 12VDC/7AH batteries.
- Includes cam lock, tamper switch and mounting hardware.

Enclosure Dimensions:
18"H x 14.5"W x 4.625"D

Backplane Dimensions:
16.625"H x 12.5"W x 0.5"D



* Boards not included

Altronix®

Trove1M1

Enclosure + Backplane

- Accommodates the following Mercury boards with or without Altronix power/accessories:
 - EP1502, MR52, MR16IN, MR16OUT
 - Altronix Power Supplies
 - Altronix Sub-Assemblies
- Includes Altronix Trove1 Enclosure and one (1) removable TM1 backplane for Mercury/Altronix boards

Altronix®

TM1

Backplane only

- Accommodates Mercury boards with or without Altronix power/accessories
- Fits Altronix Trove1 enclosure.

For 6 door Access systems

Altronix® Trove1C1

Enclosure + Backplane

Accommodates the following CDVI boards with or without Altronix power/accessories:

- A22
- Altronix Power Supplies
- Altronix Sub-Assemblies
- Includes Altronix Trove1 Enclosure and one (1) removable TC1 backplane for CDVI/Altronix boards.

TC1 Backplane only

- Accommodates CDVI boards with or without Altronix power/accessories
- Fits Altronix Trove1 enclosure.



For up to 8 door Access systems

Altronix® Trove1V1

Enclosure + Backplane

• Accommodates the following Vertx boards with or without Altronix power/accessories:

- V100, V200, V300, V1000 and V2000
- Altronix Power Supplies
- Altronix Sub-Assemblies
- Includes Altronix Trove1 Enclosure and one (1) removable TV1 backplane for Vertx/Altronix boards

TV1 Backplane only

- Accommodates Vertx boards with or without Altronix power/accessories
- Fits Altronix Trove1 enclosure.



* Boards not included

Rev. 0516

Designed & Manufactured in the U.S.A.
& Backed by a Lifetime Warranty

info@altronix.com / 718.567.8181



More than just power.™