



**Control, Monitor and Report...from Anywhere.**

LINQ2 provides remote IP access to real-time data from eFlow power supply/chargers to help keep systems up and running at optimal levels. It facilitates fast and easy installation and set-up, minimizes system downtime, and eliminates unnecessary service calls, which helps reduce Total Cost of Ownership (TCO) - as well as creating a new source of Recurring Monthly Revenue (RMR).

**LINQ2 Features:**

- Monitor and control (2) Altronix eFlow power supply/chargers via LAN and/or WAN
- Facilitates quick and accurate diagnostics to reduce or eliminate costly service calls
- Real time DC output voltage, output current, AC & battery status and unit temperature
- Local or remote control of eFlow power output(s)
- Two (2) integral network controlled Form "C" Relays
- Email and SNMP trap message notifications (instant or delayed)
- Event log tracks history
- Added security via Secure Socket Layer (SSL)
- Battery Service Reminder
- Programmable via USB or web browser
- Includes operating software and 6ft. USB cable



Status
Setup
Network Settings
Security Settings
Events Log
v1.99.13

**eFlow**  
Site ID: Lobby

**Power Supply 1 ID (eFlow6NB)**

Voltage	Current	AC Status	Battery Status	Service Battery On
14.2 VDC	0.1 amp	OK	FAIL	Sep 12, 2018

**Power Supply 2 ID (eFlow6NB)**

Voltage	Current	AC Status	Battery Status	Service Battery On
14.2 VDC	0.1 amp	OK	FAIL	Sep 12, 2018

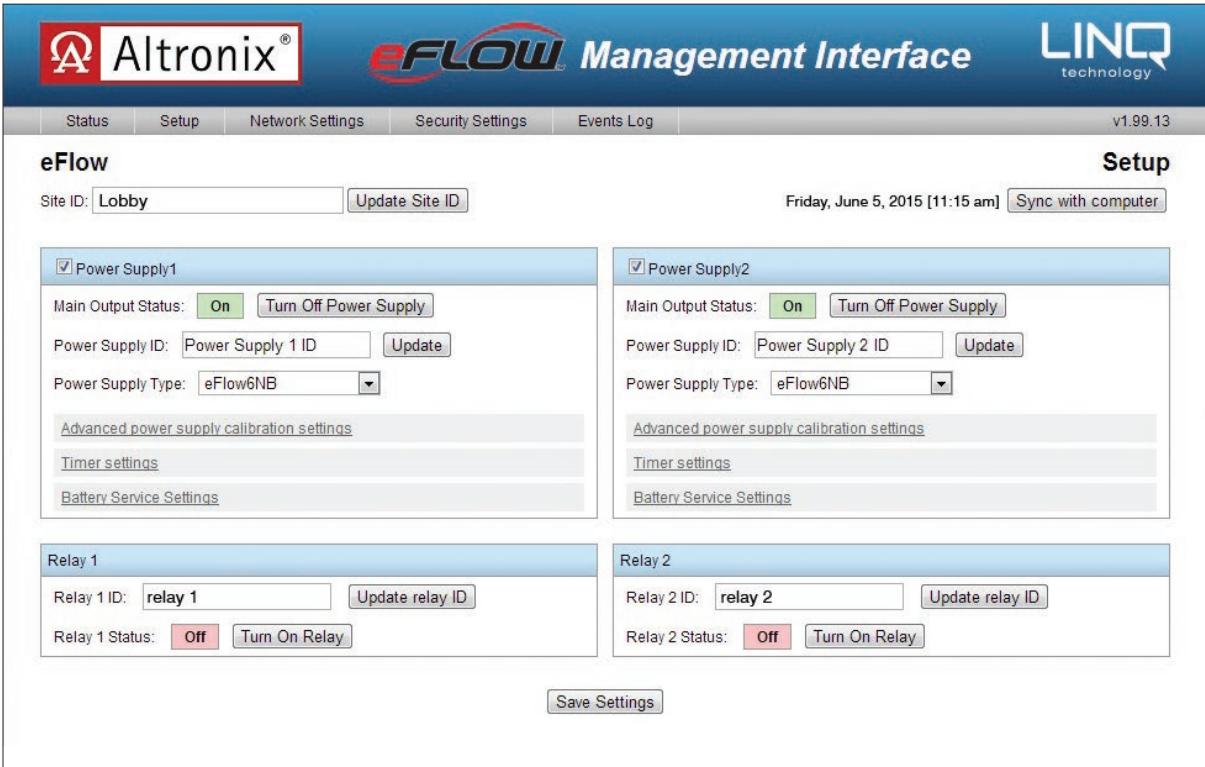
Unit Temperature: 29.9° C

**Status**  
Friday, June 5 2015 [12:24 pm]

Connection Status: OK ■

**Status Monitoring Functions:**

- |   |  |
|---|--|
| <ul style="list-style-type: none"> <li>- DC output voltage</li> <li>- Output current draw</li> <li>- AC status</li> </ul> | <ul style="list-style-type: none"> <li>- Battery Status</li> <li>- Unit temperature</li> </ul> |
|---|--|



**Setup:**

- Site ID identifies installation location
- Power supply/charger calibration
- DC output(s) control
- Relay control (remotely operate HVAC, lighting or security systems)

